

1.4" throat entry

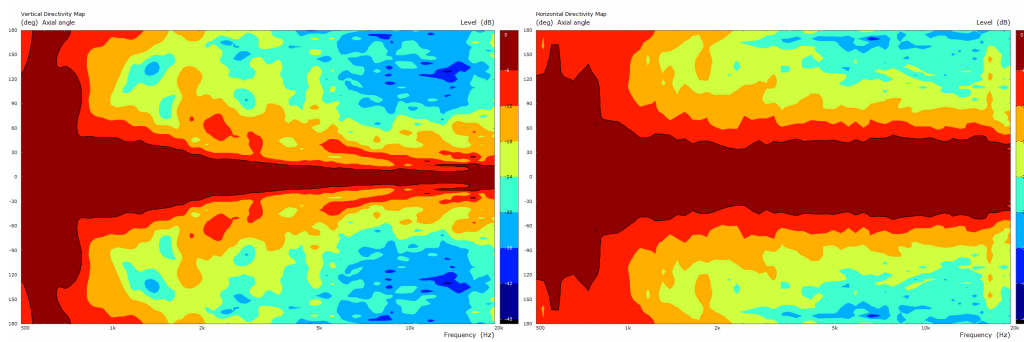
Line Array optimized Waveguide

120° max horizontal coverage

Vertical coverage depends on configuration

Very good loading down to 500 Hz

Designed specifically for the extra octaves present in our coaxial compression driver



SPECIFICATIONS

Horn mounted on B&C DE 750 compression driver.

Throat Diameter	36 mm (1.4 in)
Nominal Coverage Horizontal	120 °
Cutoff Frequency	0.5 kHz
Material	Polycarbonate
Design	Line Array Optimized Waveguide
Dimensions	240x80x174.5 mm (9.45x3.15x6.87 in)

MOUNTING AND SHIPPING INFO

Baffle Cutout Dimension	224 mm (8.82 in)
Net Weight	0.75 kg (1.65 lb)
Shipping Units	1 pcs
Shipping Weight	0.97 kg (2.14 lb)
Shipping Box	255x255x150 mm (10.04x10.04x5.91 in)